



# Halogen High Voltage DE

DWT 1000W 120V 1CT

The high, constant light output and consistent color temperature of these double ended high voltage halogen lamps ensure attractive, accurately exposed pictures for both film and video. In addition, the wide choice of dimensions and power ratings opens new levels of creative freedom for the luminaire designer.

## Product data

### • General Characteristics

Philips Code	13203R
ANSI Code	DWT
LIF Code	-
Cap-Base	R7s
Bulb Finish	Clear
Filament Shape	Coiled Coil
Operating Position	any
Main Application	Entertainment
Life to 50% failures	2000 hr

### • Light Technical Characteristics

Color Temperature	3200 K
Technical	
Luminous Flux Lamp	21500 Lm

### • Electrical Characteristics

Watts	1000 W
Voltage	120 V
Dimmable	Yes
Rapid Acting HBC	10 V
Fuse	

### • Luminaire Design Requirements

Pinch Temperature	350 (max) C
-------------------	-------------

### • Product Dimensions

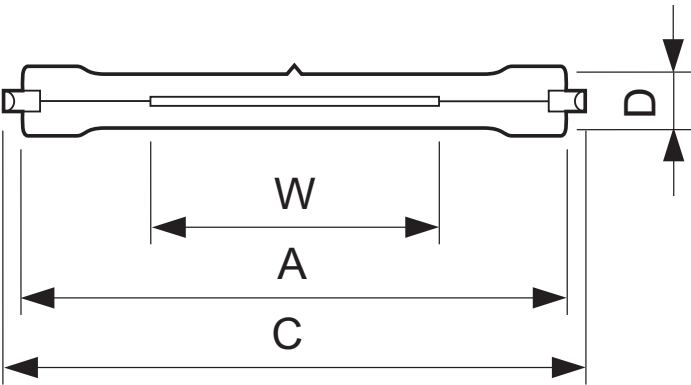
Base Face to Base	138 mm
Face A	
Overall Length C	141.5 (max) mm
Diameter D	18 (max) mm
Filament Length W	30 mm

### • Product Data

Product number	382952
Full product name	13203R 1000W R7s 120V 1CT
Short product name	13203R 1000W R7s 120V 1CT/50
Pieces per Sku	1
eop_pck_cfg	50
Skus/Case	50
Bar code on pack	8711500495402
Bar code on case	8711500521583
Logistics code(s)	924515636330
eop_net_weight_pp	0.027 kg

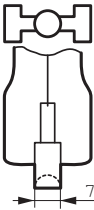
**PHILIPS**

Dimensional drawing



DWT 1000W 120V 1CT

Product	A (Min)	A (Norm)	A (Max)	C (Max)	D (Max)	W (Norm)
13203R 1000W R7s 120V	-	138	-	141.5	18	30



R7s



© 2014 Koninklijke Philips N.V. (Royal Philips)  
All rights reserved.

Specifications are subject to change without notice. Trademarks are the property of Koninklijke Philips N.V. (Royal Philips) or their respective owners.

[www.philips.com/lighting](http://www.philips.com/lighting)

2014, February 1  
data subject to change