



# Double Ended Linear

## Double Ended Linear 300W 120V T3 1CT

High-quality white light with superior lumen performanceHalogen  
Double Ended lamps provide bright,white light for work lights and  
security lighting. Rugged construction for busy work sites. Offered in  
several lengths to meet most application needs.High lumen output  
provides light where you need it.

### Product data

#### • General Characteristics

Base	R7s
Bulb	T3 [T 12mm]
Bulb Finish	Clear
Operating Position	Universal [Any or Universal (U)]
RatedAvgLife(See Family Notes)	2000 hr
Nominal Lifetime	2000 hr
Rated Lifetime (hours)	2000 hr

#### • Light Technical Characteristics

Initial lumen	5200 Lm
Luminous Efficacy Lamp	17.3 Lm/W

#### • Electrical Characteristics

Watts	300 W
Lamp Wattage Tech- nical	300 W
Voltage	120 V
Lamp Current	2.50 A
Starting Time	0.0 s

#### • Environmental Characteristics

Energy Efficiency Label (EEL)	E
----------------------------------	---

#### • Luminaire Design Requirements

Pinch Temperature	350 (max) C
Bulb Temperature	900 (max) C

#### • Product Dimensions

Insertion Length B	112.6 (min), 114.2 (nom), 115.8 (max) mm
Overall Length C	117.6 (max) mm
Diameter D	12 (max) mm

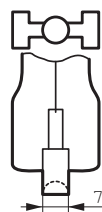
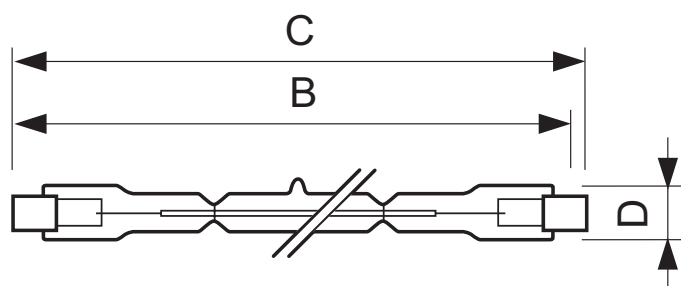
#### • Product Data

Product number	392829
Full product name	Double Ended Linear 300W 120V T3 1CT
Short product name	300T3Q/CL 120V 12PK
Pieces per Sku	1
eop_pck_cfg	12
Skus/Case	12
Bar code on pack	46677392826
Bar code on case	50046677392821
Logistics code(s)	924735234593
eop_net_weight_pp	0.010 kg

# PHILIPS

## Double Ended Linear

### Dimensional drawing



R7s

### Double Ended Linear 300W 120V T3 1CT

Product	B (Min)	B (Norm)	B (Max)	C (Max)	D (Max)
DESmall 300W R7s 120V	112.6	114.2	115.8	117.6	12



© 2014 Koninklijke Philips N.V. (Royal Philips)  
All rights reserved.

Specifications are subject to change without notice. Trademarks are the property of Koninklijke Philips N.V. (Royal Philips) or their respective owners.

[www.philips.com/lighting](http://www.philips.com/lighting)

2014, May 21  
data subject to change